
Intelligent Turning Air Mattress Instructions for Use



**Please carefully read all contents of the
Instructions for Use (IFU) before use.**

Contents

I.	PRODUCT INFORMATION.....	2
II.	NAME OF PRODUCT COMPONENTS.....	2
III.	OPERATING PARAMETERS	3
IV.	INTENDED USE	3
V.	CONTRAINDICATIONS AND CLINICAL LIMITATIONS	3
VI.	INSTALLATION AND OPERATING INSTRUCTIONS	3
VII.	WIFI SETUP METHODS.....	7
VIII.	PRECAUTIONS AND WARNINGS.....	10
IX.	SAFETY PRECAUTIONS	10
X.	PRODUCT CLEANING, MAINTENANCE, AND SERVICING	11
XI.	WORKING CONDITIONS.....	11
XII.	STORAGE AND TRANSPORT CONDITIONS	12
XIII.	PACKING LIST	13
XIV.	COMMON MALFUNCTIONS AND TROUBLESHOOTING	13
XV.	WARRANTY INFORMATION.....	14

I. PRODUCT INFORMATION

- 1、 Product name: Intelligent Turning Air Mattress
- 2、 Model: P2312
- 3、 Dimension: 2000 mm × 900 mm × 150 mm (inflated)
- 4、 Weight: 15 kg
- 5、 Route of communication: 2.4 G Wi-Fi
- 6、 Power supply: AC, 220 V, 50 Hz; input power, 75 W
- 7、 Maximum safe working load: 135 kg
- 8、 WiFi setup method: see following sections for details

II. NAME OF PRODUCT COMPONENTS

This product is composed of an inflatable mattress, air channels, an electrical control unit (ECU), and accessories. The ECU mainly comprises a control box, air pumps, and valves, and the accessories mainly include a pressure sensor pad.

1. Appearance

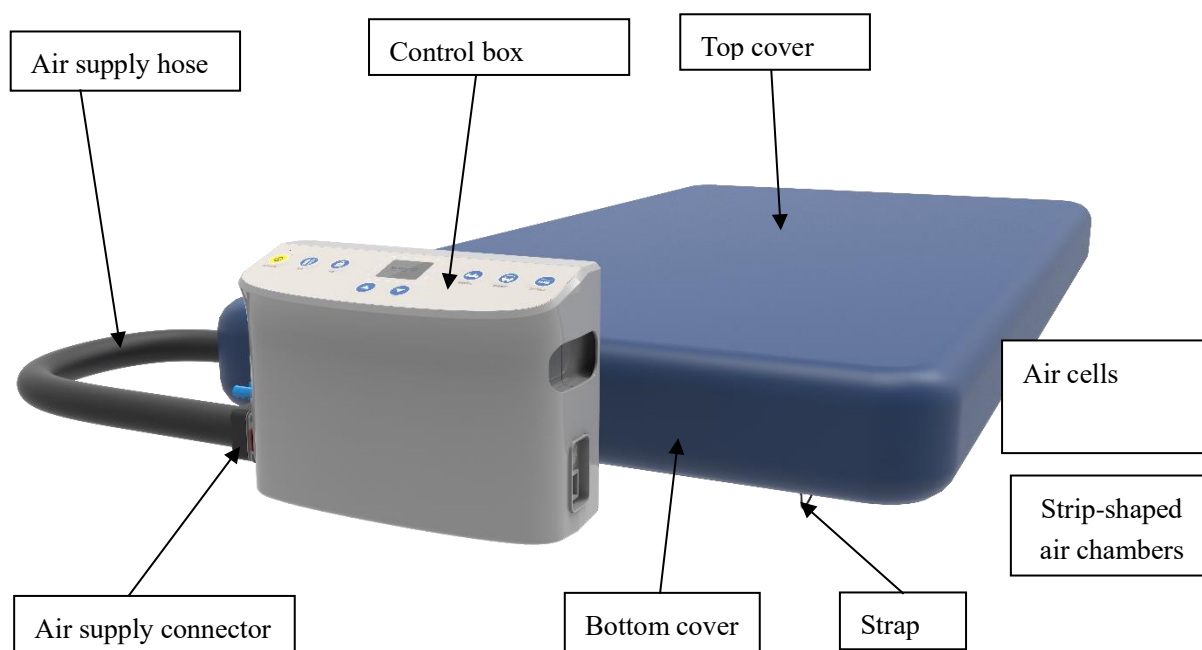


Figure 1. Structural diagram of intelligent turning air mattress

III. OPERATING PARAMETERS

Table 1. Operating parameters

Model	Maximum inflation pressure	Inflation time (min)	Operating cycle for alternating mode (min)	Operating cycle for continuous lateral rotation (min)	Turning angle
P2312	20 kPa	4	10-40, step size: 1	10-120, step size: 1	0°-30°±5°

IV. INTENDED USE

The product is intended for the prevention and relief of bedsores in bedridden patients.

V. CONTRAINDICATIONS AND CLINICAL LIMITATIONS

The product should be used with caution in patients with spinal fractures.

VI. INSTALLATION AND OPERATING INSTRUCTIONS

1. Installation:

1. Hang the control box on the footboard of the bed or place it on the floor near the footboard.
2. Lay the air mattress flat on the bed with proper orientation of the head and foot ends. If the mattress is equipped with a pressure sensor pad, insert the sensor connector into the socket of the main control box.

2. Device Connection:

1. Plug the air supply connector into the control box (see Figure 2).



Figure 2

2. Plug the control box into a power outlet.

3. Operation Steps:

1. Turn on the power switch to boot the whole unit.
2. Lock/unlock the function buttons by long pressing the "Lock" button. The function buttons will automatically be locked after 30 seconds of inactivity. The LED light will turn on when the buttons are in a locked state.



Figure 3

3. Press the "Height" button to enter the Height Settings interface. Press the "Up" or "Down" arrow buttons to adjust the value.



Figure 4

-
4. Press the "Weight" button to enter the Weight Settings interface. Press the "Up" or "Down" arrow buttons to adjust the value.



Figure 5

5. Press the "Alternating Mode" button to enter the Alternating Mode Settings interface. Press the "Up" or "Down" arrow buttons to adjust the alternating cycle duration.



Figure 6

6. Press the "Turning Mode" button to enter the Turning Mode Settings interface. Press the button again to switch between Turning Left, Turning Right, Auto-Turning, and No Turning modes. Under the Auto-Turning mode, press the "Up" or "Down" arrow buttons to adjust the turning cycle duration.



Figure 7

7. Press the "Other Mode" button to enter the Other Mode Settings interface. Press the button again to switch between Nursing mode and Static mode.

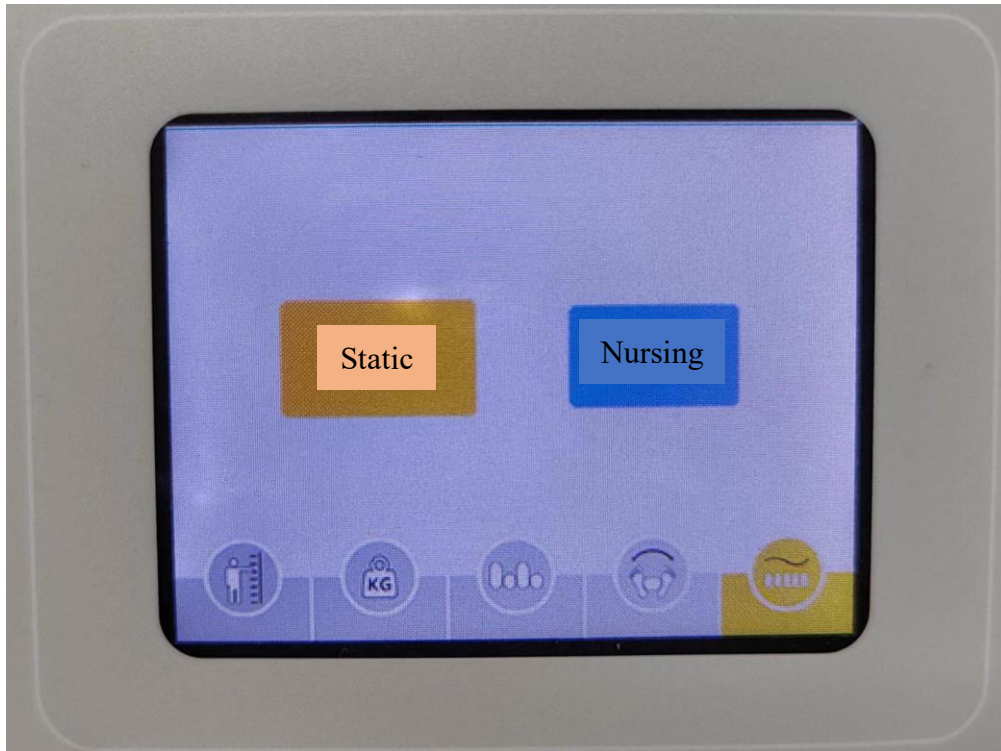


Figure 8

8. The above installation and commissioning steps can be completed by the user in accordance with the IFU. For any questions, please consult us by phone.

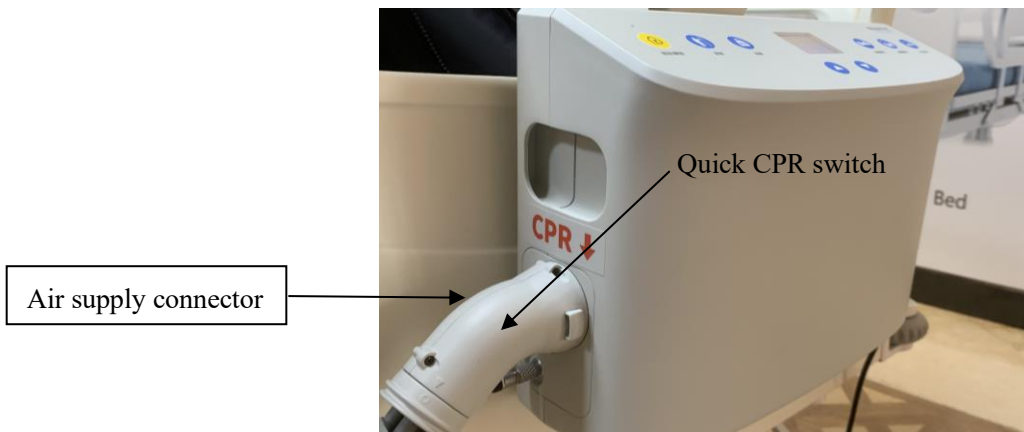
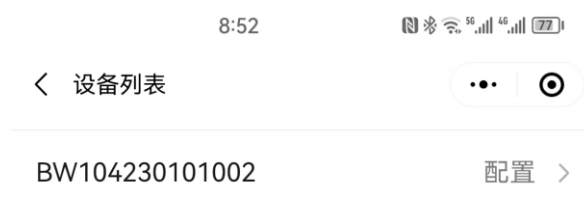
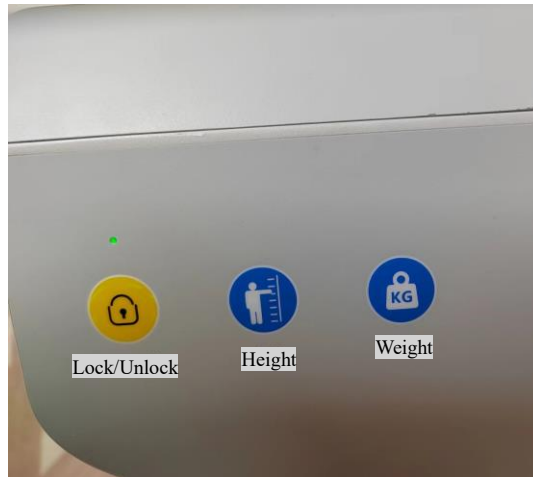


Figure 9. Schematic diagram of quick CPR switch

VII. WIFI SETUP METHODS

1. Continuously press the yellow "Lock/Unlock" button on the Intelligent Turning Air Mattress control box for 5 times, and use the WeChat mini program to search for the corresponding number of this device (such as BW104230101002).



2. According to the prompts on the page, select the "Distribution Network" option and click "Start Configuration".



3. Enter the name, password, port number, and IP address (provided by the manufacturer) of the router to be connected, and click "Send". For configuration with a Bewatek server, set the port number to 1883 and the IP address to 121.196.191.130.

wifi信息

SSID	B1
密码	●●●●●●●●

服务器信息

地址	114.55.252.16
端口	1883
用户名	请输入mqtt用户名
密码	请输入mqtt密码

发送配置

返回首页

4. A message of "WiFi setup successful" will pop out.

wifi信息

SSID	B1
密码	●●●●●●●●

服务器信息

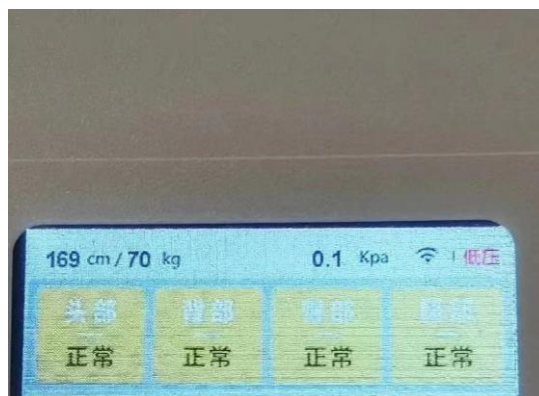
地址	114.55.252.16
端口	
用户名	用户名
密码	密码

配置成功

发送配置

返回首页

5. Check the WIFI logo on the control box of the Intelligent Turning Air Mattress.



VIII. PRECAUTIONS AND WARNINGS

1. Prior to using any of the functions of the product, please read the warning signs or labels shown prominently on the device and follow the instructions.
2. Do not exceed the safe working load of the air mattress (135 Kg).
3. The Quick CPR function is only intended for use in the event of cardiopulmonary resuscitation (CPR).
4. Standardized primary care should be provided to the patients on the basis of appropriate use of this product.
5. The hose and power cord should not be subjected to excessive pressure or forceful bending and pulling so as to prevent damage.
6. Avoid scratching the mattress with sharp objects and keep it away from open flames.
7. The air pumps should be used in a ventilated, clean, and sanitary environment.
8. In the event of air mattress malfunction, maintenance must be performed by qualified personnel.
9. If the ECU is damaged, it should be repaired or replaced by qualified personnel or maintenance staff designated by the manufacturer. Do not disassemble the electrical components if you are not a qualified technician.
10. Safety hazards resulting from improper handling of power cords, such as heavy objects pressing on cables or wires, should be avoided.
11. The air mattress should be inspected by qualified personnel at least once a year, and the safety hazards identified should be promptly addressed to reduce risks during usage.
12. The product is supplied with a 2 A/250 V fuse, which should not be replaced with a fuse of other specifications at will.
13. The external power supply of the Intelligent Turning Air Mattress should be reliably grounded at all times, and should be disconnected if the product is not used for a long time.
14. During use, electromagnetic interference above 3 V/m should be avoided. Possible sources of interference include televisions, microwaves, X-rays, etc.

IX. SAFETY PRECAUTIONS

For the safety of you and the device, please observe the following safety guidelines:

- Considering the adjustment period of a new product, it is recommended to wait for at least 8 hours, preferably 12 hours, before using the air mattress after the first inflation, and avoid fully inflating the mattress during the first 2 days of use;
- Overinflation of the air mattress should be avoided at all times of use;

-
- The air mattress and air pumps should be kept away from fire sources such as cigarettes;
 - Do not immerse the air pumps in water or other liquid;
 - Do not clean the mattress with carbonic acid or phenolic solutions;
 - Please ensure that the product has been cleaned and dried before storage;
 - Do not place sharp objects or electrothermal pads on top or underneath the air mattress;
 - Unplug the control box before cleaning and inspecting the air mattress;
 - Please use the control box and air mattress provided by the manufacturer. The use of incorrect models or other products may result in malfunctions of the product;
 - Considering temperature changes over the year, it is advisable to deflate the mattress when it expands due to temperature rise and inflate it upon temperature drop.

X. PRODUCT CLEANING, MAINTENANCE, AND SERVICING

1. Wipe the surface of the air mattress frequently to maintain its pristine condition and prolong its service life. The mattress covers should be cleaned after each patient use, which should be cleansed with a disposable cloth soaked in the solution of neutral detergent and warm water and then wiped to dry.
2. Do not use phenolic or particulate-added cleaning agents as they may damage the surface layer of the fabric. Do not immerse the electrical components in water during cleaning.
3. Please clean and disinfect the product with 75% alcohol.
4. Owing to the self-lubricating function of the electrical control system, there is no need for oil lubrication during use, which may result in stains.
5. When deflating the air mattress, please first turn off the air pump switch and cut off the power, and then pull out the connecting hose from the air pump. The Quick CPR valve may be opened at the same time. After the air is completely released, the mattress can be folded and placed in a ventilated and dry place. It should be protected from moisture and direct sunlight exposure.

XI. WORKING CONDITIONS

1. Ambient temperature: 10 °C – 40°C
2. Relative humidity: 30% – 75%
3. Atmospheric pressure: 700 hPa – 1060 hPa.

XII. STORAGE AND TRANSPORT CONDITIONS

1. Packaged air mattresses can be transported using standard transportation vehicles. During transportation, the product should be handled with care, avoiding throwing, rolling, or applying excessive pressure, and should be protected from the rain.
2. Packaged air mattresses should be stored in a well-ventilated room free from corrosive gases, with an ambient temperature of -20°C - 55°C and relative humidity of $\leq 85\%$.

XIII. PACKING LIST

Table 2. Packing list

No.	Name	Quantity
1	Intelligent turning air mattress	1
2	Instructions for use	1
3	Product certificate	1
4	Pressure sensor pad	Optional

Please check the packaged items against the packing list and examine the condition of the Intelligent Turning Air Mattress and its accessories (see Table 3 for the accessory list). Should any damage be detected, please contact the after-sales service team promptly.

XIV. COMMON MALFUNCTIONS AND TROUBLESHOOTING

In the event of any problems with this product, you may address them by following the troubleshooting guideline provided below. If the problem persists or is not listed below, please contact the after-sales service team.

Table 3. Common malfunctions and troubleshooting methods

Problems	Possible Cause(s)	Solution
WiFi setup failure	Network failure	Restart the device
Power outage	Connection failure	Replug the power cord
Excessive inflation time	Hose failure	Check whether the air supply connector is properly connected
Air leakage	Connector not properly plugged in	Reconnect the connector

XV. WARRANTY INFORMATION

1. Within one year from the date of purchase, the product is eligible for our free repair service.
2. The following situations are excluded from the scope of free warranty:
 - 1) Damage resulting from failure to use, maintain, and store the product in accordance with the IFU;
 - 2) Damage due to accidental or intentional destruction.
3. In the event of any product malfunction or damage, please contact our company or our distributor as soon as possible for timely repair services.
4. Prior to maintenance, please provide the purchase receipt for verification purposes. Even after the expiration of the warranty period, our company continues to offer complimentary services and will only charge the incurred cost for replacement parts during maintenance.
5. Upon request by the user, our company can provide technical documents that are helpful to professional personnel for repair, including product component list, functional diagrams, and electrical control schematic diagrams.
6. Please use the accessories or materials provided by our company. The use of accessories or materials, such as air pumps and hoses, from other resources may compromise product safety.
- 7.

Warranty Card

Customer feedback

Name: _____

Sex: Male [] Female [] _____

Mobile phone number: _____

Date of purchase: _____

Contact address: _____

Malfunction description: _____

BEWATEC (Zhejiang) Medical Equipment Co., Ltd.

Registered address: F2, Building 7, No. 1133 Taoyuan Road, Gaozhao Subdistrict, Xiuzhou District, Jiaxing, Zhejiang Province

Registered address: F2, Building 7, No. 1133 Taoyuan Road, Gaozhao Subdistrict, Xiuzhou District,
Jiaxing, Zhejiang Province

Tel.: +86-400-9980998