

**BEWATEC®**



Scan to follow our official WeChat account



Scan to watch our videos

**BEWATEC (ZHEJIANG) MEDICAL EQUIPMENT CO., LTD.**

📍 Building 5, Jiaxing Hi-Tech King World Zone, No. 1700, Dongsheng West Road ,  
XiuZhou District, Jiaxing City, Zhejiang Province

☎ +86-400-998-0998

🌐 [www.en-bewatec.com](http://www.en-bewatec.com)

✉ [sales@bewatec.com.cn](mailto:sales@bewatec.com.cn)



BEWATEC (CHINA)



## Chairman's Speech

Since the establishment of BEWATEC in 1995, we have managed to acquire mature technology and a broad market, thanks to years of accumulation of experience in the industry. We've been focusing on the clinical requirements for the safety of patients while providing our clients with increasingly valuable products through the combination of theoretical research and smart manufacturing, with constant efforts in innovating technologies and solutions.

The settlement of BEWATEC in China is a breakthrough of the Belt and Road Initiative in the field of high-end smart Medicare between China and Europe, providing a platform for international communications for scientific research, technology and product coordination and innovation in the field of medical care between China and Germany.

As a global leader in seamless nursing services, we will be committed to our social responsibility of "pioneering and innovating, leading the revolution of products", aiming at the deep entanglement of digitalization, IT and manufacturing so as to accelerate the combination of new technologies and clinical trials, to support high-quality care and efficient management and to boost the high-quality development of China's medical industry, making our contribution to the global Medicare industry.

We Digitalize Hospitals

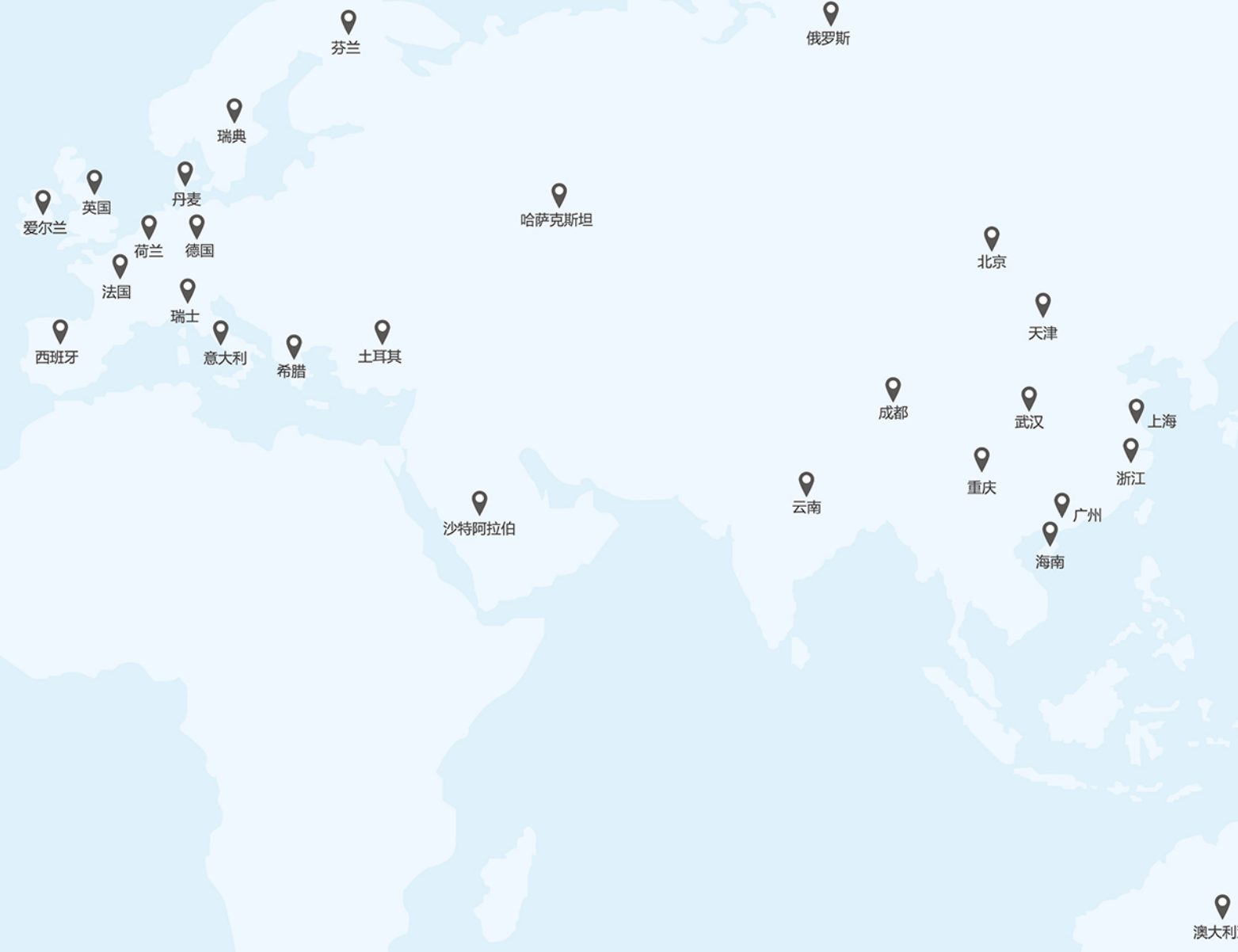
## Company Profile

BEWATEC was founded in Germany in 1995. After nearly 30 years of growth, its global businesses has stretched to more than 300,000 terminals in more than 1,200 hospitals in 15 countries.

BEWATEC has been focusing on smart medical care and is committed to the digital transformation of the global medical care industry, providing patients with comfortable, safe and personalized digital care journeys, thus becoming a global leader for specialized smart medical care overall solution (AIoT/ Internet Nursing). The company has a market share of more than 60% in Germany, and maintains cooperation with two-thirds of medical universities and institutions, including the world's top ranking universities such as Freiburg University and Tübingen University. In China, BEWATEC has established ties with famous universities such as School of Medicine of the Fudan University, East China Normal University, etc. and the academician team of Jiaying University, jointly working on scientific researches, product development, and clinical trials.

Relying on the advantageous resources of talents, scientific research and market, BEWATEC manages to set up a post-doctoral workstation, which help accelerate the transformation of scientific and technological achievements by taking advantage of the global product layout, and promote the healthy, continuous, rapid and high-level development of industry.

BEWATEC has successively settled demonstrative outlets in Shanghai Ruijin Hospital, Shanghai Renji Hospital, Shanghai Changhai Hospital, Jiaying Second Hospital and many other top ranking hospitals in China, helping Ruijin Hainan Hospital to become a smart research hospital, where China's first domestic Smart GCP ward and a national level smart palliative care center were created, contributing to the development of China's medical and health care industry.



 <b>15<sup>+</sup></b> Nation	 <b>1200<sup>+</sup></b> Hospitals	 <b>30万<sup>+</sup></b> Terminals
--	---	--



The BEWATEC Medical Center is led by a team of members with doctor's degree acquired from home and abroad, enabling the interaction of R&D centers in five countries (Germany, China, the United States, Italy, and Hungary). High-quality resources are assembled and, through an integration of research achievements and smart manufacturing, the conversion of medical achievements are swiftly converted into practice.

BEWATEC is committed to promoting the Belt and Road Initiative in the field of high-end smart medical care between China and Europe, building a bridge for in-depth academic exchange of products, technologies, and medical resources between the two sides. By integrating resources from prestigious European hospitals, universities, and enterprises, BEWATEC has provided an international platform that boosts the coordination and innovation of scientific research, technology, and products in the field of medical care.

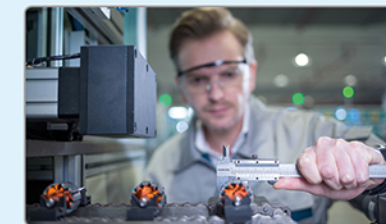


We Digitalize Hospitals

## R&D

BEWATEC has been exploring the boundaries of scientific research through its innovative efforts, and adhering to the R&D of smart processes and applications, that is, empowering itself with intelligent procedures. Our vision is to promote the digitalization of the global medical care through innovative R&D, to create a new ecology with a virtuous circle of medicine, industry and academia, which creates added value for the society.

BEWATEC has five major R&D centers around the world with a post-doctoral workstation as the core. The high-quality research teams all over the world with their own expertise are the solid foundation of our innovative strength. Relying on the existing clinical, R&D and talents, taking the opportunity of the hospital-enterprise joint R&D center, we are aiming to realize cross-field collaboration in the innovation and pool our resources to train staffs, so as to achieve new opportunities for our creative cause.



## Quality Assurance

The product quality sets the foundation for our further development. The quality system established by BEWATEC in the past 30 years is able to ensure the availability of each component and spare part. We adhere to the lean quality and ingenuity of Germany as we keep improving the product quality and reliability.

The CNAS certification laboratory established to maintain the high quality of products keeps conducting continuous and state-of-the-art testing on the products. Our quality management system ensures that the products delivered in each step of production have undergone rigorous quality assessments. Strict quality control is implemented throughout the production.



## CONTENTS

<b>A5</b> Electric Bed	02	<b>Y1</b> Three-function Manual Bed	10
<b>P2</b> Anti-bedsores Mattress	05	<b>M1</b> Manual Transfer Bed	12
<b>A7</b> Electric Bed	06	<b>M2</b> Hydraulic Transfer Vehicle	13
<b>Y0</b> Two-function Manual Bed	09	<b>Accessories Series</b>	14

### Post-sale Service

In the global integrated service system, BEWATEC has been employing its rich experience and, with a professional and rigorous attitude, providing reliable and considerate support for the products it provides to you. Over the years, BEWATEC has been adhering to professional standards, pursuing excellence in each detail of its service and design, continuously bringing more efficient and meticulous services.

Customer managers, experienced technicians and professional service personnel working all over the world, swift and efficient maintenance, and high quality service will keep your products in the most cutting-edge condition and remove all your concerns.

## Aceso Series A5 Electric Bed

Designed for high-end wards, it contains a series of unique and revolutionary features providing great support for patients' vital signs and minimizing the hazards for their health.



### Features :

- German Dewert motor, quiet design, high safety
- Four-piece disassemblable full-enclosed guardrail, in line with EN60601-2-52 safety standards
- The digital sensor monitoring module supports real-time monitoring of the bed occupancy, brake locking, and railing status
- Water ripple detachable bed panel is in line with ergonomics
- TPR double-sided central controlled casters, silent and wear-resistant, stable and reliable
- Weighing system/X-ray backboard/Bed extension/Fifth wheel optional

- Whole bed size (Length X Width X Height) : 2190x1020x ( 470~870 ) mm
- Bed size : 1950x850mm
- Safe load : 220kg

### Description of Features



## Configuration Details of A5 Electric Bed

Type of Registration Certificate		A522			A52W2		
Type	Type 1	Type 2	Type 3	Type 4	Type 5	Type 6	
Functions	Back Up/Down	•	•	•	•	•	•
	Leg Up/Down	•	•	•	•	•	•
	Bed Up/Down	•	•	•	•	•	•
	Tredelenburg Position	•	•	•	•	•	•
	Reverse-tredelenburg Position	•	•	•	•	•	•
	Cardiological Chair Position	•	•	•	•	•	•
	Shock Position	•	•	•	•	•	•
	Electric CPR	•	•	•	•	•	•
	Mechanical CPR	•	•	•	•	•	•
	Quick-stop Function	•	•	•	•	•	•
Bed Structures & Components	Head Panel & Foot Panel	HDPE	HDPE	HDPE	HDPE	HDPE	HDPE
	Lying Surface	ABS	ABS	ABS	ABS	ABS	ABS
	Auto-regression	•	•	•	•	•	•
	Siderail	•	•	•	•	•	•
	Drainage Hook	•	•	•	•	•	•
	Drip Stand Holder	•	•	•	•	•	•
	Bondage Ring/Plate	•	•	•	•	•	•
	Mattress Retainer	•	•	•	•	•	•
	Frame Cover	•	•	•	•	•	•
	Built in Side Rail Controller	○	•	•	○	•	•
	Underbed Light	○	○	•	•	•	•
	3 Mode Bed Exit Alarm	○	○	○	•	•	•
	Nurse Panel	○	○	Button	LCD	LCD	LCD
	Hand Controller	Button	Silicone Button	LCD Button	Button	Silicone Button	LCD Button
Caster	Double-sided Central Control	Double-sided Central Control(with Electricity Caster)	Import Double-sided Central Control(with Electricity Caster)	Double-sided Central Control	Double-sided Central Control(with Electricity Caster)	Import Double-sided Central Control(with Electricity Caster)	
Electrical Controlling	Backup Battery	•	•	•	•	•	
Networking	WiFi+Bluetooth	•	•	•	•	•	
Upgrade Module	Diditalized Module	Upgradable(A522-1D)	Upgradable(A522-2D)	Upgradable(A522-3D)	Upgradable(A52W2-1D)	Upgradable(A52W2-2D)	Upgradable(A52W2-3D)
Other Accessories	Table	Over Bed Table	Over Bed Table	Over Bed Table	Over Bed Table	Over Bed Table	Over Bed Table
	Mattress	TPU Foam Mattress	TPU Foam Mattress	TPU Foam Mattress	TPU Foam Mattress	TPU Foam Mattress	TPU Foam Mattress



### Hecate Serie P2 Anti-bedsores Mattress

## Wisdom Driving Innovation in Nursing Technology Forward

#### Features :

- PU fabric material, waterproof, breathable and antibacterial
- Accurate adaptation to personalized BMI pressure to meet the requirements of different patients
- Visualized pressure monitoring effectively guiding changes of body positions
- Innovative 3-section flipping structure in line with ergonomics
- Refueling stick module achieves long-term pressure retention of the mattress
- Diversified working modes allowing for flexible switchover between wave, static, nursing, and flipping modes

Length after inflation	Width after inflation	Height after inflation
2000±80mm	900±50mm	150±20mm



## Aceso Series A7 Electric Bed

A smart bed representing the highest intensive care, with a unique design to provide patients with all-round care from first aid to rehabilitation.



### Features :

- German silent electronic controlling system, full coverage of nursing
- Four pieces of disassemblable guardrails, a fully enclosed structure giving the patient the maximum level of protection
- The digital sensor monitoring module supports real-time monitoring of the bed occupancy, brake locking, and railing status
- Unique fluid-type angle indicator, indicating the patient's safe body position
- The whole bed can be turned to 30° to effectively prevent the occurrence of bedsores
- Soft LED light design under the bed is convenient for patients to move at night
- Weighing system/X-ray backboard/Bed extension/Fifth wheel optional

- Whole bed size (Length X Width X Height) : 2190x1020x ( 470~870 ) mm
- Bed size : 1950x850mm
- Safe load : 220kg

### Description of Features





## Configuration Details of A7 Electric Bed

Type of Registration Certificate		A722		A72W2	
Type		Type 1	Type 2	Type 3	Type 4
Functions	Back Up/Down	•	•	•	•
	Leg Up/Down	•	•	•	•
	Bed Up/Down	•	•	•	•
	Lateral Tilting	•	•	•	•
	Tredelenburg Position	•	•	•	•
	Reverse-tredelenburg Position	•	•	•	•
	Cardiological Chair Position	•	•	•	•
	Shock Position	•	•	•	•
	Electric CPR	•	•	•	•
	Mechanical CPR	•	•	•	•
	Quick-stop Function	•	•	•	•
	Bed Structures & Components	Head Panel & Foot Panel	HDPE	HDPE	HDPE
Lying Surface		ABS	ABS	ABS	ABS
Auto-regression		•	•	•	•
Siderail		•	•	•	•
Drainage Hook		•	•	•	•
Drip Stand Holder		•	•	•	•
Bondage Ring/Plate		•	•	•	•
Mattress Retainer		•	•	•	•
Frame Cover		•	•	•	•
Built in Side Rail Controller		•	•	•	•
Underbed Light		○	•	○	•
Electronic Brake		○	•	○	○
Wireless Power Transport		○	•	○	•
3 Mode Bed Exit Alarm		○	○	•	•
Foot Board Screen		○	•	○	•
Hand Controller		Silicone Button	Silicone Button	LCD Button	LCD Button
Nurse Panel		Button	Button	LCD	LCD
Caster		Import Double-sided Central Control(with Electricity Caster)	Import Double-sided Central Control(with Electricity Caster)	Import Double-sided Central Control(with Electricity Caster)	Import Double-sided Central Control(with Electricity Caster)
Electrical Controlling	Backup Battery	•	•	•	
Networking	WiFi+Bluetooth	•	•	•	
Upgrade Module	Digitalized Module	Upgradable(A722-1D)	Upgradable(A722-2D)	Upgradable(A72W2-1D)	
Other Accessories	X-ray Translucent Bed Surface	○	•	○	
	Extension	○	•	○	
	Fifth Wheel	○	Mechanical Model	○	
	Table	Over Bed Table	Over Bed Table	Over Bed Table	
	Mattress	TPU+Positioning Mattress	TPU+Positioning Mattress	TPU+Positioning Mattress	



### Higia Series Y0 Two-function Manual Bed

Functional, aesthetically pleasing, and simple design promote safe and efficient care.

#### Description of Features



#### Features :

- Quick-detachable HDPE bed head and tail board, speeding up the clinical first aid
- Anti-soiling curved railings, anti-pinch design, no dead corners for cleaning
- 5-inch central controlled swivel casters, silent, reliable and durable
- Concealed continuously variable protection crank system, sturdy and durable, capable of flexible control
- Upgradeable for digital sensor monitoring modules

#### Curved tube/Four-piece guardrail is optional



Whole bed size (Length X Width X Height)	Bed size	Safe load
2190x1020x500mm	1950x850mm	220kg



## Higia Series Y1 Three-function Manual Bed

High-standard design and diversified functions fully meet the high requirements of general wards and provide more focused care.

### Description of Features



Whole bed size (Length X Width X Height)	Bed size	Safe load
2190x1020x ( 450~750 ) mm	1950x850mm	220kg

Curved tube/Four-piece guardrail is optional



### Features :

- The four corners are equipped with double-layer bumper wheels, which is a second protective approach
- The backboard retraction feature effectively prevents the occurrence of bedsores
- Sanitized antibacterial materials are added to the bed to reduce the risk of bacterial infection
- Centralized locking system allowing for double-sided braking stably and reliably
- Integrated safety protection system with a concealed design that avoids accidental injury
- Upgradeable for digital sensor monitoring modules



## Configuration Details of Manual Bed

Type of Registration Certificate		Y012	Y112	Y022	Y122
Type		Type 1	Type 2	Type 3	Type 4
Functions	Back Up/Down	•	•	•	•
	Leg Up/Down	•	•	•	•
	Lying Surface Up/Down	○	•	○	•
Bed Structures & Components	Head Panel & Foot Panel	HDPE	HDPE	HDPE	HDPE
	Lying Surface	Metal	Metal	Metal	Metal
	Siderail	Curved Tube	Curved Tube	HDPE	HDPE
	Caster	Double-sided Central Control	Double-sided Central Control	Double-sided Central Control	Double-sided Central Control
	Auto-regression	•	•	•	•
	Drainage Hook	•	•	•	•
	Drip Stand Holder	•	•	•	•
	Mattress Retainer	•	•	•	•
	Storage Basket	•	•	•	•
	Networking	WiFi+Bluetooth	•	•	•
Upgrade Module	Diditalized Module	Upgradable (Y012-2D)	Upgradable (Y112-2D)	Upgradable (Y022-1D)	Upgradable (Y122-2D)
Other Accessories	Table	Telescopic Dining Table	Telescopic Dining Table	Telescopic Dining Table	Telescopic Dining Table
	Mattress	Foam Mattress	Foam Mattress	Foam Mattress	Foam Mattress

## Machaon Series M1 Manual Transfer Bed

High-efficiency transportation capability and lightweight design provide the best assistance to nursing staffs.

### Description of Features



Whole bed size (Length X Width X Height)	Safe load
1930x663x ( 510-850 ) mm	170kg

### Features :

- The guardrail can be placed horizontally, making it easy to place the dripping stand
- Safety lock setting on the foot-side prevents accidental operation
- 5-inch silent casters, central controlled brake pedal at 4 corners
- Aluminum alloy die-cast joint parts formed in one piece are able to resist oxidation, thus are durable
- 3-section mattress, with waterproof and breathable fabric, easy to clean
- Back panel angle indicator prominently shows the angle change
- Weighing accessories(optional)



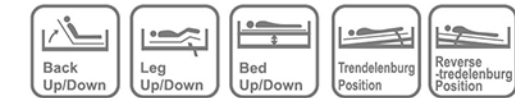
### Blue guardrail (Optional)



## Machaon Series M2 Hydraulic Transfer Vehicle

Multi-functional transportation trolley can move quickly and operate under any critical conditions, which is specifically designed for patient safety.

### Description of Features



### Features :

- Silent dual gas springs making up/down movements more stable
- Central controlled silent casters, with central controlled locking pedals at four corners, easy for medical staff to operate
- The guardrail is equipped with double safety locks for higher security
- Independent center fifth wheel prevents accidental operations
- Equipped with a holder for oxygen cylinder, which can be placed either horizontally or vertically
- Weighing accessories(optional)

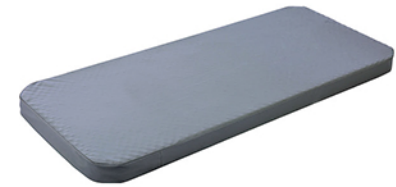
Whole bed size (Length X Width X Height)	Safe load
2150x830x ( 560-890 ) mm	220kg

### Blue emergency bed/foldable guardrail emergency bed/recording table (optional)



## Accessories Series

### Mattress



**M21**  
Size : 1945×825×100mm  
Mattress fabric: Denim  
Mattress lining: white sponge



**M22**  
Size : 1945×825×100mm  
Mattress fabric: TPU  
Mattress lining: white sponge



**M32**  
Size : 1945×825×100mm  
Mattress fabric: TPU  
Mattress lining: high-density memory foam

### Bedside table



**BC-01 / ABS bedside table**  
Size : 480×480×760mm



**BC-02 / ABS bedside table**  
Size : 480×480×780mm



**BC-03 / ABS bedside table**  
Size : 480×480×780mm



**BC-04 / ABS bedside table**  
Size : 475×475×830mm



**BC-05 / Steel-plastic integrated bedside table**  
Size : 510×510×710mm



**BC-06 / Steel-plastic integrated bedside table**  
Size : 465×465×810mm

## Accessories Series

### Retractable dining panel



**TP-01 / ABS retractable dining panel**  
Size : 890×350×40mm



**TP-02 / ABS retractable dining panel**  
Size : 880×320×30mm

### Mobile dining table



**MT-01 / Mobile dining table**  
Size : 820×450×840/1040mm



**MT-02 / Mobile dining table**  
Size : 900×400×750/1140mm

### IV drip stand



**IS-01 / IV drip stand**  
Size : 800-1500mm



**IS-02 / IV drip stand**  
Size : 1175-2090mm